

# WILLERSLEY CASTLE

## YEAR 6 RESIDENTIAL

WEDNESDAY 20TH-FRIDAY 22ND SEPTEMBER 2023

---

Willersley Castle was built in 1792 by Richard Arkwright, the famous entrepreneur & inventor, from the industrial revolution. The estate offers exceptional facilities within a 65 acre estate on the edge of the Peak District. The grounds consist of woodlands, fields and gardens inhabited by an abundance of wildlife; as well as the the River Derwent which flows along 2km of the estate.

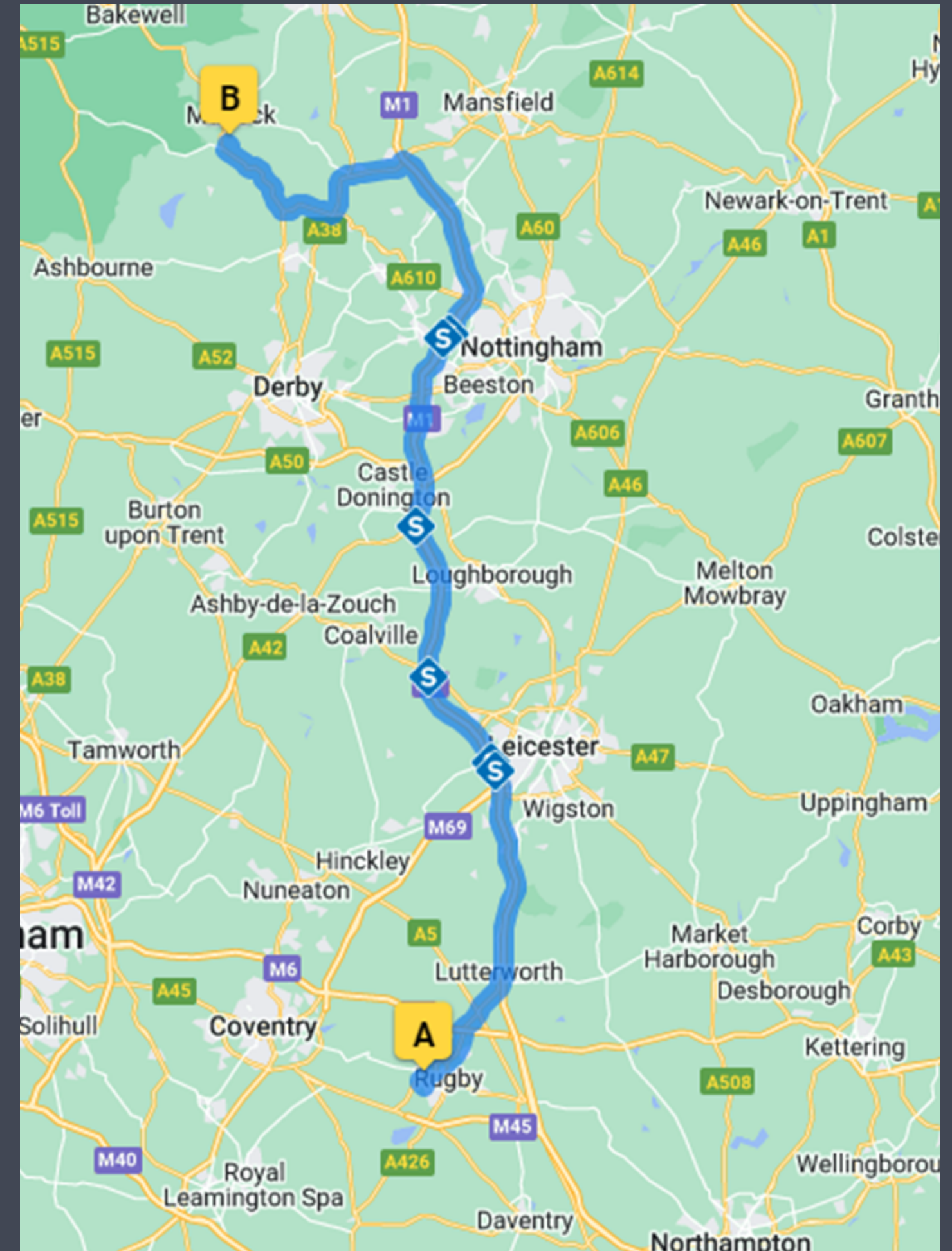


# Leaving School

## WHAT IS THE PLAN?

---

- It will take roughly 90mins to get there
- We have no planned stops along the way
- Chn will be able to choose a friend to sit next to there and back





# Matlock Bath

When we arrive, we take a short walk into Matlock Bath. Children are allowed a maximum of £10 to spend on ice-cream, treats and in the arcade.



# **What are the rooms like?**

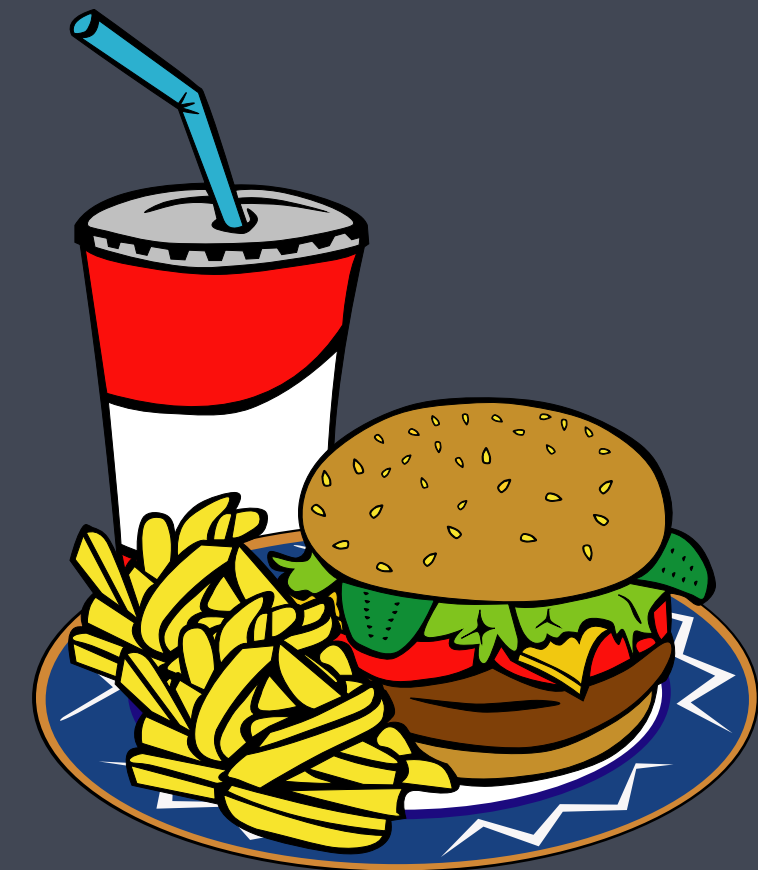
---

- All rooms have an en-suite
- All rooms are near to a teachers
- Children will need a sleeping bag and pillow as no bedding is provided.

# What will we eat?

---

- Family favourites are served and all dietary requirements are catered for
- Portions are generous - nobody goes hungry!
- Drinks are available at all mealtimes



**Rock Climbing**



**Blind Trail**

**WHAT  
ACTIVITIES  
ARE ON  
OFFER?**

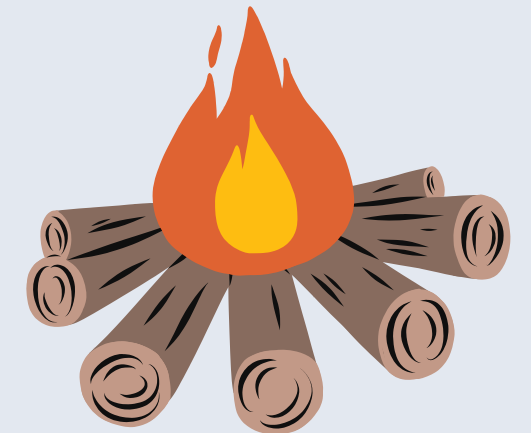
**Kayaking**



**Low Ropes**



**Campfire**



**Evening Walk**

*Time For*  
**ADVENTURE**

**Aero Ball**

# Important bits

---



- As soon as we can check in, you will be sent to set up your rooms and then we will do a fire drill
- A teacher is located nearby to every room; last year, each room was next to a teacher's
- Unless it's an emergency, we encouraged children to be quiet in their rooms between the hours of 10pm and 7am
- Each room has an en-suite
- Dietary and medical information will be sent ahead
- They will send people back to change if they are not dressed properly for the activities; this delays the whole group